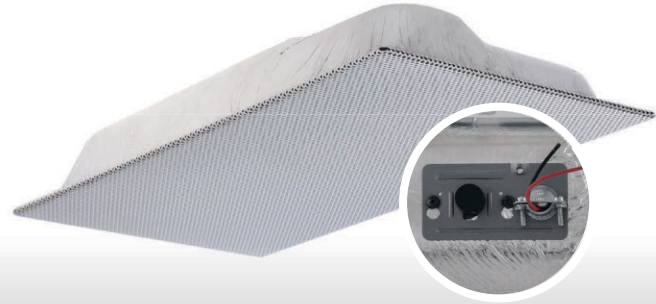


# Quam SYSTEM 5/25RS

SYSTEM 5/25RS is a complete, UL Listed, shallow depth, lightweight, 1' x 2' ceiling tile replacement loudspeaker system consisting of an 8" O.D., dual cone loudspeaker with a 5 oz. magnet and a 4W, 25V, rotary select transformer. The molded fiber enclosure is 617 CID. The SYSTEM 5/25RS has a powder coated steel baffle with standard perforation and four (4) seismic tie-off points. The cable clamp and one (1), 24", "T" rail are included. No assembly required.



## APPLICATION

**Intended Use:**

Indoor environment

**Program Material:**

Signal tones, voice, and music

**Installation:**

Mounted parallel to floor plane in a 24" wide suspended ceiling tile grid

**City of Chicago Approved:**

Material and construction permits use where ceiling plenum is part of the air handling system

## AUDIO PERFORMANCE

**Average Sensitivity:**

92dB SPL, 1W/1M

**Loudspeaker Power Rating:**

12W RMS, EIA 426A Standard

**Maximum Power Rating:**

15W @ 8 Ohms

**Calculated Output:**

98dB SPL, 4W/1M

**Magnet Type & Weight:**

BeFe Ceramic, 5 oz. Nominal

**Frequency Response:**

65Hz - 17kHz, EIA 426A Standard

**Nominal Coverage Angle:**

100° Included Angle, -6dB/2kHz, Half Space

**Audio Connection:**

7 1/2", Color-coded, Pre-tinned Leads

## COMPONENT

**Dimension:**

3 1/2" (H) x 23 13/16" (W) x 11 13/16" (D)

**Weight:**

4.05 lbs.

**Loudspeaker Model:**

8C5PAX

**Loudspeaker Specs:**

8" O.D. loudspeaker, 5 oz. magnet

**Transformer:**

4W, 25V, rotary select with 5 taps (0.25W, 0.50W, 1W, 2W, 4W)

**Integral Enclosure:**

617 CID molded fiber

**Grille:**

Standard perforated steel with four (4) seismic tie-off points

**Finish:**

White powder coat finish

## CERTIFICATION

**UL Listed 1480**

When installed with supplied installation instructions and requirements of NEC /AHJ. (UEAY, UEAY7- Canada)

**UL Listed 2043**

Suitable for use in air-handling spaces

