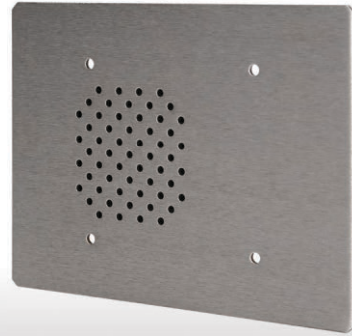


# Quam CIS6/25

The CIS6/25 is a 3-gang, vandal resistant, hands free call station with a 3", square frame loudspeaker that has a 2.35 oz. ceramic magnet, moisture resistant cone, and a 1W, 25V transformer. Three (3) interwoven, steel security screens are mounted between the stainless steel faceplate and loudspeaker. Tamper-resistant, #6-32 x 1", 'pin-in-torx' screws are included.



<b>APPLICATION</b>	<b>Intended Use:</b> <b>Program Material:</b> <b>Mounting:</b>	Indoor or protected outdoor environment Signal tones and voice 3-gang electrical box
<b>AUDIO PERFORMANCE</b>	<b>Average Sensitivity:</b> <b>Loudspeaker Power Rating:</b> <b>Maximum Power Rating:</b> <b>Calculated Output:</b> <b>Magnet Type &amp; Weight:</b> <b>Frequency Response:</b> <b>Nominal Coverage Angle:</b> <b>Audio Connection:</b>	87dB SPL, 1W/1M 4W RMS, EIA 426A Standard 5W @ 8 Ohms 93dB SPL, 5W/1M BeFe Ceramic, 2.35 oz. Nominal 300Hz - 10kHz, EIA 426A Standard 90° Included Angle, -6dB/2kHz, Half Space 7", Color-coded, Pre-tinned Leads
<b>COMPONENT</b>	<b>Dimension:</b> <b>Weight:</b> <b>Loudspeaker Model:</b> <b>Loudspeaker Specs:</b> <b>Transformer:</b> <b>Finish:</b> <b>Material:</b> <b>Other:</b>	5 1/2" (H) x 7 1/2" (W) x 1 15/16" (D) 3 lbs. 30C25Z80T 3" O.D., moisture resistant loudspeaker 1W, 25V with 3 taps (0.25W, 0.5W, 1W) Brushed 12 gauge, stainless steel faceplate Three (3) interwoven, steel screens mounted between faceplate and loudspeaker, four (4), tamper resistant, #6-32 x 1", 'pin-in-torx' screws included
<b>RECOMMENDED QUAM COMPONENTS</b>	<b>Enclosures:</b> <b>Custom Engraving &amp; Fill:</b>	Surface Mount — SE3GVP Contact the factory for details and lead times

