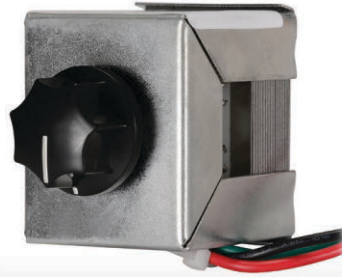


Quam QC10RM

QC10RM is a UL Listed, rack mount, 20W, ten-step, continuous rotary, audio level attenuator with an OFF position and a black knob with white indicator mark. 2" x 2" dial scale label for a 2RU rack panel is included. Legend is white on black.



APPLICATION	Intended Use: Primary Use: Installation:	Indoor environment Attenuates audio power to any number of loudspeakers, up to 20W load For use with 25V or 70V distributed audio systems 2RU rack panel or greater, 1/8" maximum thickness
AUDIO PERFORMANCE	Power Rating: Attenuation (Ref:25V, 70.7V line): Insertion Loss: Audio Connection:	20W Continuous Position 10 : Full Signal Position 9-3 : -3dB Each Position 2-1 : -6dB Each Position 0 : No Signal < 0.5dB 10", Color-coded, Pre-tinned Leads
COMPONENT	Dimension: Weight: Other:	2 1/16" (H) x 1 5/8" (W) x 2 3/16" (D) 1 lbs. Black knob with white indicator mark 2" x 2" dial scale label for a 2RU rack panel is included
CERTIFICATIONS	UL Listed 813:	When installed in accordance with supplied instructions and connected to supply circuits in accordance with ANSI/NFPA70, NEC, and AHJ

