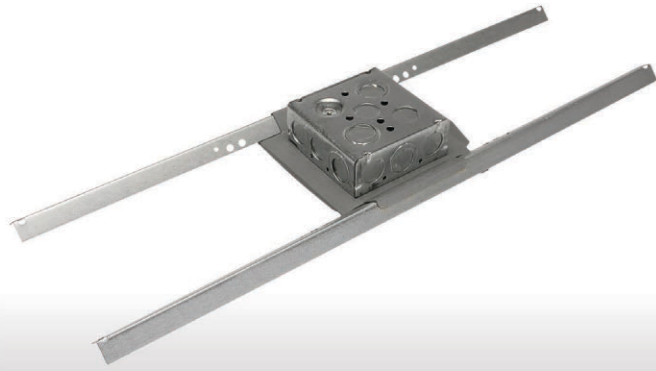


# Quam SSB-1900

SSB-1900 is a rust resistant steel, load bearing support with a medium depth, 18.0 CID, steel '1900' electrical junction box.



<b>APPLICATION</b>	<b>Intended Use:</b> <b>Installation:</b>	Indoor environment Parallel to floor plane in a suspended ceiling structure; maximum span of 24" in one dimension
<b>COMPONENT</b>	<b>Dimensions:</b> <b>Weight:</b> <b>Material:</b>	1 1/2" (H) x 23 3/4" (W) x 6 15/16" (D) 2 lbs. Rust resistant steel
<b>JUNCTION BOX ACCESS</b>	<b>All 4 Vertical Sides:</b> <b>Top Horizontal Surface:</b>	Two (2), 1/2" conduit k/o; one (1), 1/2" - 3/4" combination conduit k/o Three (3), 1/2" conduit k/o; two (2), 1/2" - 3/4" combination conduit k/o
<b>MECHANICAL ATTACHMENT</b>	<b>Bottom Horizontal:</b> <b>Tie-offs:</b>	Two (2) 8-32 formed threads to attach 2-gang surface adapter plate if required Six (6) total: one (1) on each end of bridge support rails; two (2) on terminal plate

