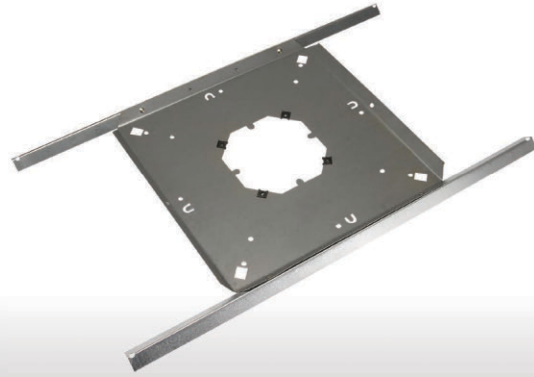


# Quam SSB-4

SSB-4 is a rust resistant steel, load bearing support for 4" O.D. loudspeaker assemblies in a drop-tile ceiling grid. Easy "mark & cut," "square" hole design for fast and efficient installation. Multiple seismic tie-off points are provided. Tinnerman clips provide easy screw threading, quick mount tabs hold the back box in place without screws, and locating tabs provide secure mounting positions in ceiling tiles.



<b>APPLICATION</b>	<b>Intended Use:</b> <b>Installation:</b>	Indoor or protected outdoor environment Parallel to floor plane in a suspended ceiling structure; maximum span of 24" in one dimension
<b>COMPONENT</b>	<b>Dimensions:</b> <b>Weight:</b> <b>Material:</b> <b>Other:</b>	14 7/16" (H) x 24 3/4" (W) x 9/16" (D) 1.75 lbs. Rust resistant steel Multiple seismic tie-off points, Tinnerman clips, quick mount tabs
<b>RECOMMENDED QUAM COMPONENTS</b>	<b>Baffles:</b> <b>Enclosures:</b>	BR4WS ERD-8, ER8DU

