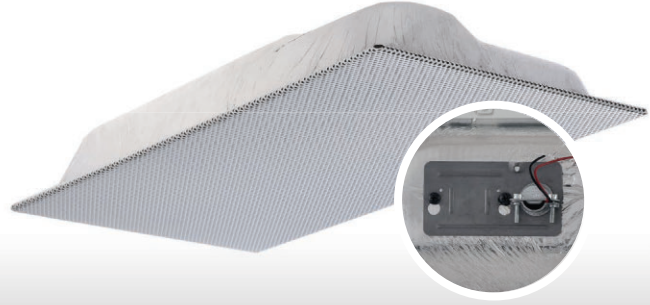


Quam SYSTEM 16/8

SYSTEM 16/8 is a complete, UL Listed, shallow depth, lightweight, 1' x 2' ceiling tile replacement loudspeaker system consisting of an 8" O.D., foam edge loudspeaker with a 10 oz. magnet and an 8 Ohm impedance. The molded fiber enclosure is 617 CID. The SYSTEM 16/8 has a powder coated steel baffle with standard perforation and four (4) seismic tie-off points. The cable clamp and one (1), 24", "T" rail are included. No assembly required.



APPLICATION

Intended Use:

Indoor environment

Program Material:

Signal tones, voice, and music

Installation:

Mounted parallel to floor plane in a 24" wide suspended ceiling tile grid

City of Chicago Approved:

Material and construction permits use where ceiling plenum is part of the air handling system

AUDIO PERFORMANCE

Average Sensitivity:

95dB SPL, 1W/1M

Loudspeaker Power Rating:

20W RMS, EIA 426A Standard

Maximum Power Rating:

20W @ 8 Ohms

Calculated Output:

102dB SPL, 5W/1M

Magnet Type & Weight:

BeFe Ceramic, 10 oz. Nominal

Frequency Response:

60Hz - 17kHz, EIA 426A Standard

Nominal Coverage Angle:

100° Included Angle, -6dB/2kHz, Half Space

Audio Connection:

4", Color-coded, Pre-tinned Leads

COMPONENT

Dimension:

3 1/2" (H) x 23 13/16" (W) x 11 13/16" (D)

Weight:

4.16 lbs.

Loudspeaker Model:

8C10FEPAX

Loudspeaker Specs:

8" O.D. loudspeaker, 10 oz. magnet

Integral Enclosure:

617 CID molded fiber

Grille:

Standard perforated steel with four (4) seismic tie-off points

Finish:

White powder coat finish

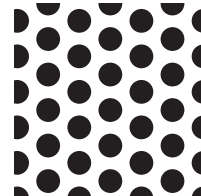
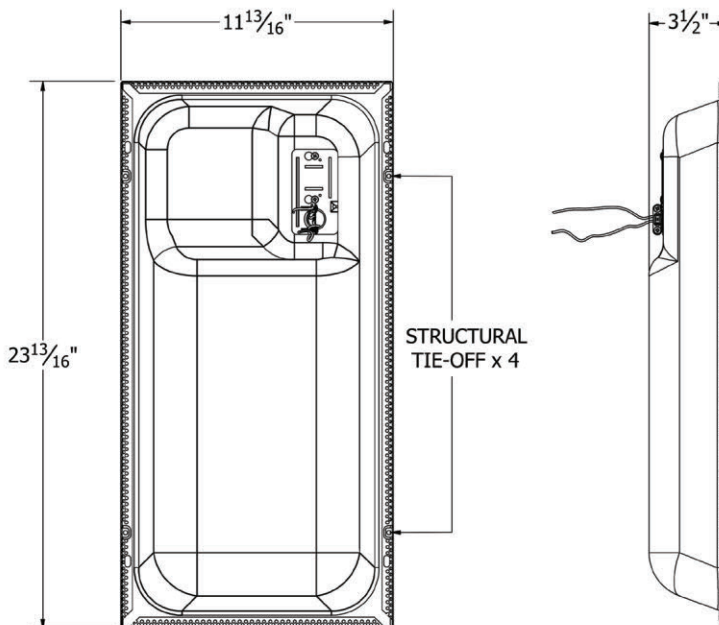
CERTIFICATION

UL Listed 1480

When installed with supplied installation instructions and requirements of NEC /AHJ. (UEAY, UEAY7- Canada)

UL Listed 2043

Suitable for use in air-handling spaces



Standard Perforation Pattern
Shown as 1" Square Sample